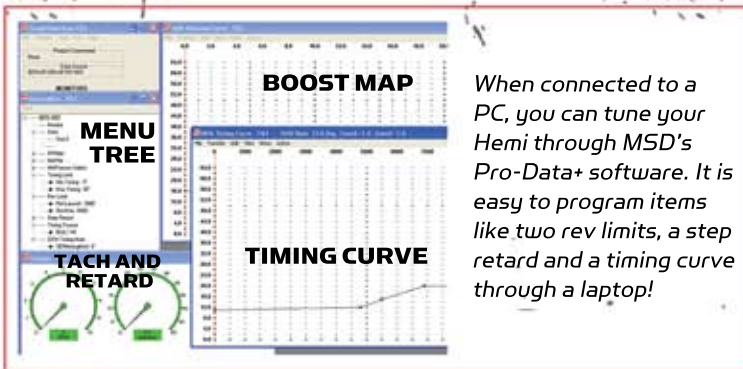


6-HEMI Ignition Controller, PN 6013



Hemi fans old and new will be excited to see that the 6-Hemi Controller will connect to factory EFI fueled Hemis or will drive the coil packs of a carbureted retro-fit engine!

The Controller plugs into each coil pack along with the crank and cam sensors to provide you the ability to modify the timing curve, set a two step rev limit, nitrous retard or even a boost/timing map! The 6-Hemi Controller is designed to operate with both style coil packs that are offered on the new engines. A wiring harness for each application is sold separately.



- **Fire the coils and control the timing on Hemis retro-fit with a carburetor or factory EFI**
- **Program two rev limits and a step retard**
- **Connects directly to the coils, crank, cam and MAP sensors for easy installation**

Part Number	Description	MVP Price	UPC
PN 6013	6-HEMI Ignition Controller	\$498.60	0 85132 06013 9
MAIN HARNESS REQUIRED.			
PN 88863	Main Harness - '03-'05	\$200.00	0 85132 88863 4
PN 88864	Main Harness - '06-'08	\$200.00	0 85132 88864 1
FOR EFI YOU'LL NEED THE MAIN HARNESS AND AN EFI HARNESS			
PN 888815	EFI Adapter Harness - '03-'05	\$157.10	0 85132 88815 3
PN 888816	EFI Adapter Harness - '06-'08	\$157.10	0 85132 88816 0

The complete performance electronics source

Ignitions, Coils, Spark Plug Wires, Timing Controls, EFI, Starters, Alternators, Magnetos, Gauges, Data Acquisition and more.

For more information call 915-855-7123

or visit www.msdition.com